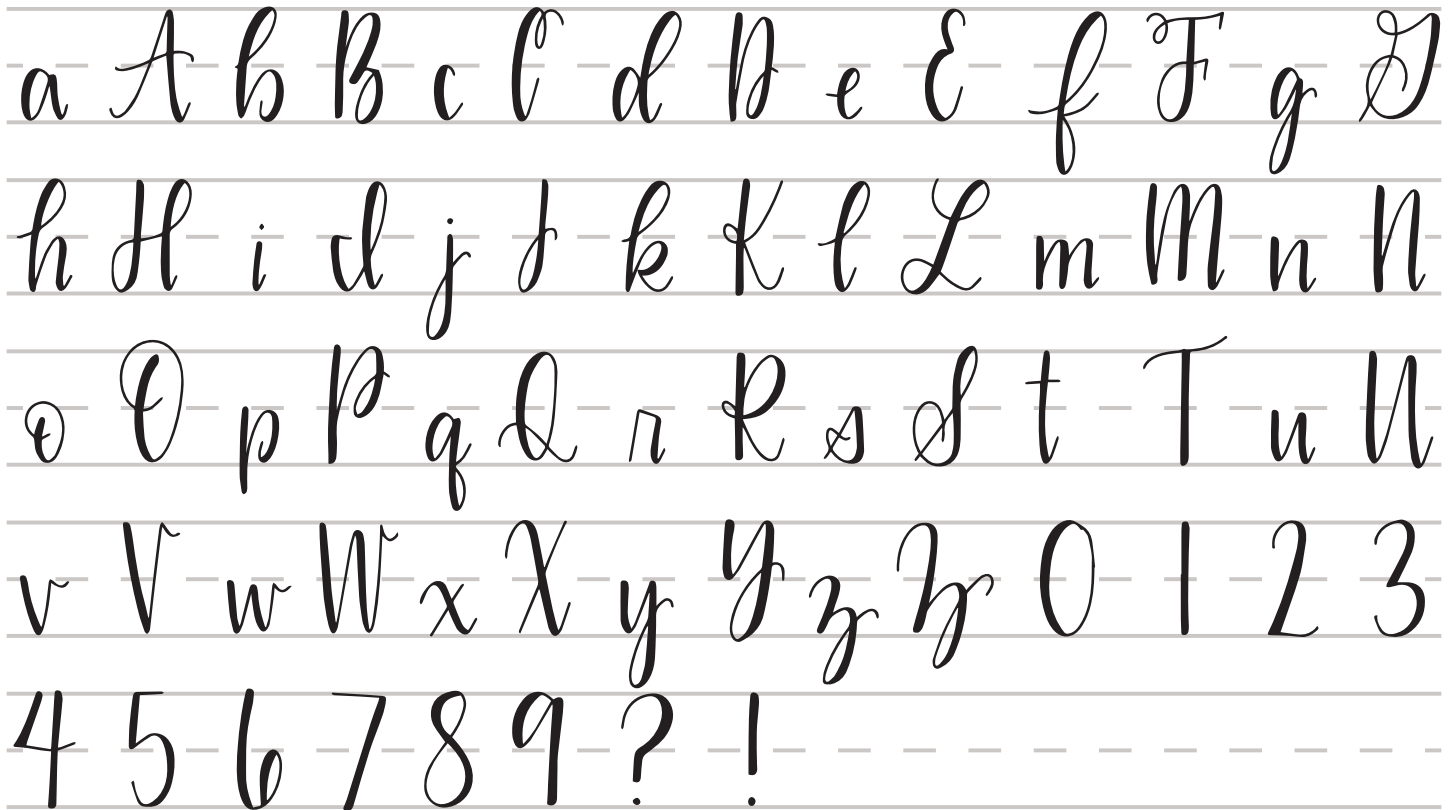


HOW TO CREATE FAUX CALLIGRAPHY WITH MONO DRAWING PENS & TWINTONES

- 1 Draw your letter in any lettering style you wish *a*
- 2 Where your hand moved down to create the letter, draw a line to the right of each part of the letter *a*
- 3 Fill in and your faux calligraphy is complete! *a*

FULL ALPHABET EXEMPLAR



HOW TO CREATE FAUX CALLIGRAPHY WITH MONO DRAWING PENS & TWINTONES

a a a b b b c c c d d d

e e e f f f g g g h h h

i i i j j j k k k l l l

m m m n n n o o o p p p

q q q r r r s s s t t t

u u u v v v w w w x x x

y y y z z z A A A B B B

C C C D D D E E E F F F

G G G H H H I I I J J J

K K K L L L M M M N N N

HOW TO CREATE FAUX CALLIGRAPHY WITH MONO DRAWING PENS & TWINTONES

O O O P P P Q Q Q R R R

S S S T T T U U U V V V

W W W X X X Y Y Y Z Z Z

0 0 0 1 1 1 2 2 2 3 3 3

4 4 4 5 5 5 6 6 6 7 7 7

8 8 8 9 9 9 ? ? ? ! ! !

Blank handwriting practice lines consisting of solid top and bottom lines with a dashed midline.