

LESSON PLAN: FORM ZOO ANIMALS



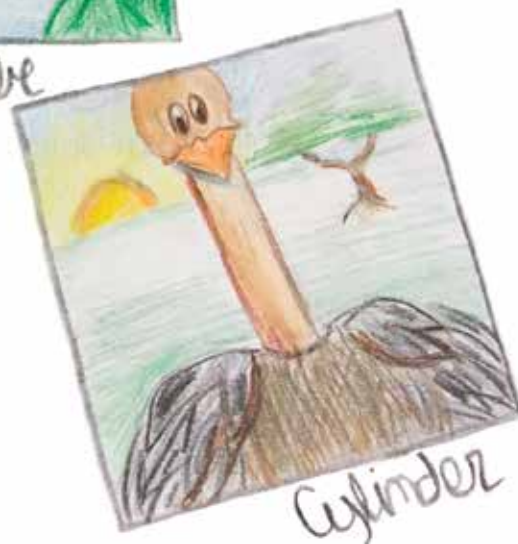
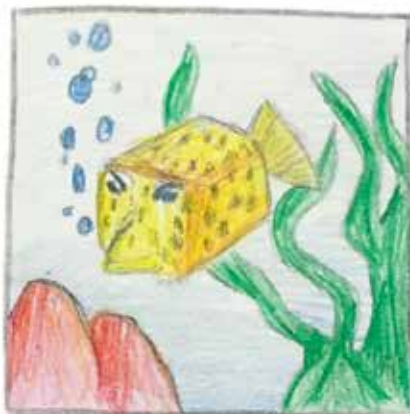
INTRODUCTION

In this lesson, real world connections are shown between animals and the elements of design form. Spheres, cubes, cones and cylinders are all used to highlight these similarities in design and the animal kingdom. Colored pencils are also used to show how forms can appear more three dimensional. This lesson is created for grades 6-12.

OBJECTIVE

The students will:

- Learn about connecting animals to a basic shape
- Translate shapes into their 3D forms
- Understand the importance of colored pencil techniques
- Create a zoo animal using a type of form



MATERIALS

- Tombow Recycled Colored Pencils
- Drawing Paper

LESSON PLAN: FORM ZOO ANIMALS



DIRECTIONS

Begin by discussing the Elements of Design Shape, Form and Value. Show students examples of each E.O.D. and have them make examples of their own. Then demonstrate colored pencil blending, valuing and have students practice these techniques as well.

1

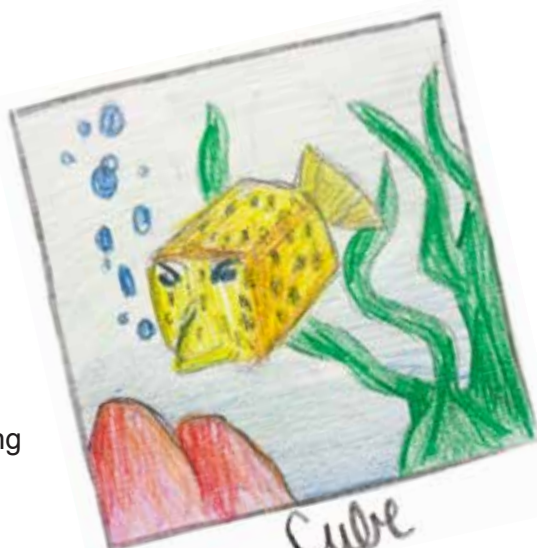
Have students discuss in groups which zoo animals match up to certain shapes and forms.



Cone

2

Students then will choose an animal to sketch and design using its coordinating form for part of its body.



Cube

3

Use colored pencil techniques to help make zoo animals look more three dimensional.

4

Have students create a background design for their animal, still using colored pencil techniques.



Cylinder

ALTERNATIVES

- Use printed form examples to match with a zoo animal for students to use as a reference to draw and color.
- Use a basic form to create and design a new zoo animal.