

Marker Blending Techniques

By Marie Browning



An introduction to a blending coloring technique using Tombow's blending palette and Dual Brush Pens. Indirect blending with the colorless marker; a perfect method when working on lighter papers or papers that don't blend using traditional blending methods.



Materials

Tombow Blending kit - includes palette,
Colorless Blender Marker, and
Mister
Tombow Dual Brush Pens
526, 452, 451, 856, 905, 899, 977
White Gel Pen
MONO Dots Adhesive
Downloaded Image

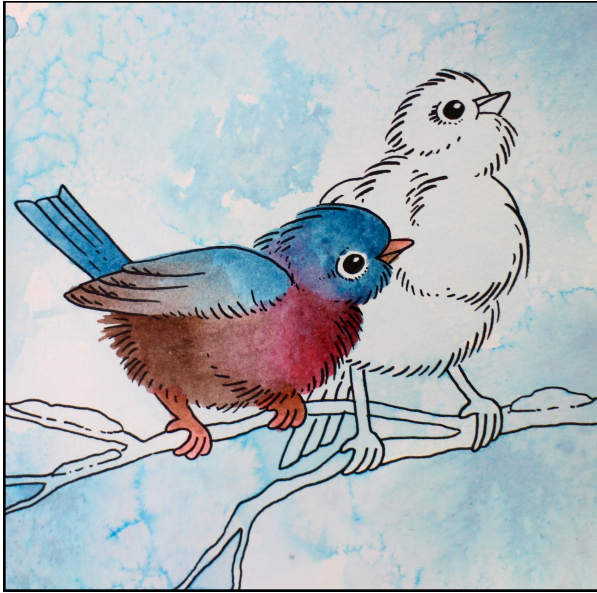
Printing out the images:

Simply download the images from tombowusa.com and print with a **laser printer** onto a heavy paper. I used cut sheets 8.5 x 11 from Canson's Mix Media paper. Always test the markers on the image to make sure printed the ink does not run.



Splash Background

Begin with a light all-over background coloring. Using marker 452 Process Blue, cover the entire blending palette with color. With the mister filled with water, spritz the water onto the palette. To make this a light background, spritz a fair amount of water onto the surface. Turn over and place onto the image to create the background. At this point I sponged off the color on the birds with a paper towel to keep clear. While the color is still wet, sprinkle on salt for a mottled effect. Let dry and brush off excess salt.

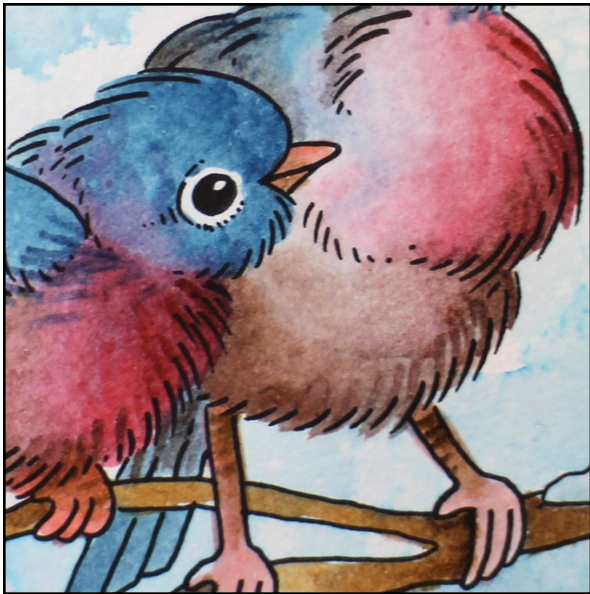


Basic Blending

Place marker colors 526 True Blue, 856 Chinese Red, 899 Redwood, 977 Saddle Brown and 905 Red onto the palette. With the brush tip colorless blender, pick up the color, much like picking up color from a palette with a paintbrush.

Start to color where you want the darkest shades, and keep coloring until there is no more color. This results in a perfect blend from dark to light as the marker runs out of color.

The head of the bird, wing and tail are colored with the True Blue. The breast is colored with the Chinese Red. The tips of the wings, tail and bottom of the body is colored with Redwood. The beak and feet are colored with the Red and the branch with Saddle Brown.



Detail Blending

To create the colored strokes, the fine tip of the blender pen was used.

For the details in the body of the bird, the Redwood was picked up from the palette with the fine tip. Draw the detail strokes using following the black strokes on the design. This helps to blend the colors together and give the bird more interest.



Adding Snowflakes

This step is optional but adds a beautiful pattern to your finished piece. Make sure your surface is completely dry and add a simple star pattern with the white gel pen, the 451 Sky Blue and 452 Process Blue pens.

With the brush tip of the 452 Process Blue marker, trace around the inside edge of the boarder. Trim and mount your card with MONO Dots Adhesive onto a black square card blank.

